



**STAKEHOLDER ENGAGEMENT**  
**NOVEMBER 6<sup>th</sup> 2025**

# ABI STAKEHOLDER ENGAGEMENT

- Overview of the ABI
- Progress since the last meeting:
  - Training Working Group
  - Updated training information on the website
  - Outreach highlights & upcoming events
  - Communities of Practice
- Interim Council updates:
  - IAC member updates
  - Governance model for comment
  - Bid to host the ABI Hub
  - Updates: Group Leader Applications
  - Associate Group Leaders and Fellows
- Student forum
- Questions?

# BACKGROUND AND SCOPE

- H3ABioNet built significant bioinformatics capacity for human genomics.
- Several other initiatives have contributed capacity in parallel.

## Motivation

- Sustain & Expand: Preserve and grow capacity developed by past initiatives.
- Meet Growing Demand: Support the surge of life science data and big data initiatives.

## Close Gaps

- Limited data and compute infrastructure.
- Insufficient skilled workforce to translate data into impact.
- Bioinformatics remains a major bottleneck across sectors.

## ENABLE IMPACT

High-quality infrastructure for research & pandemic preparedness

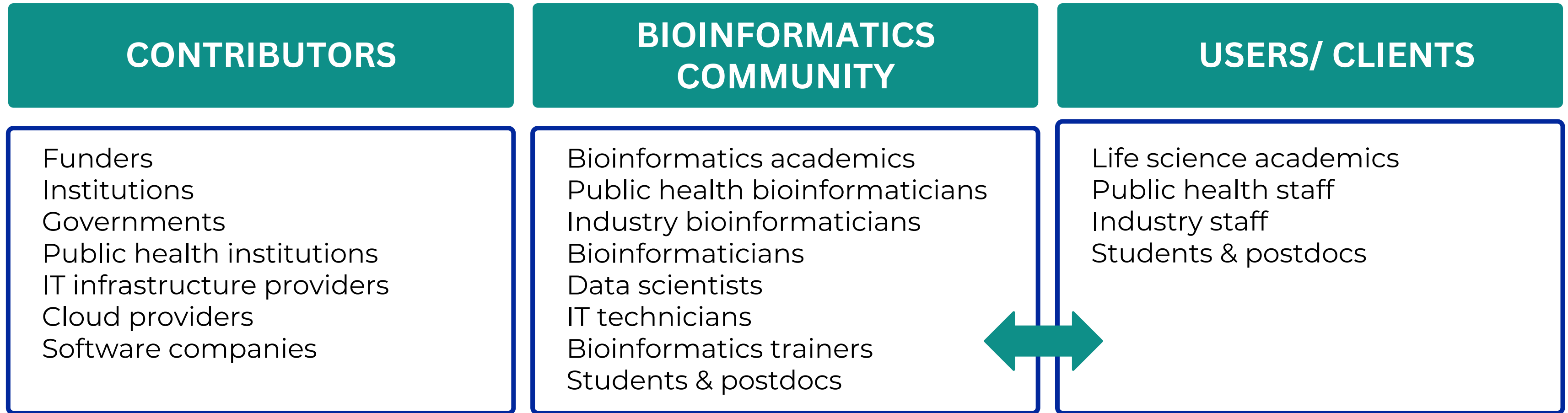
Advance One Health approaches across Africa.

Promote data sharing & knowledge exchange to improve global health and biodiversity.

Connect world-class researchers & foster collaboration.

Provide training for many different personas in bioinformatics

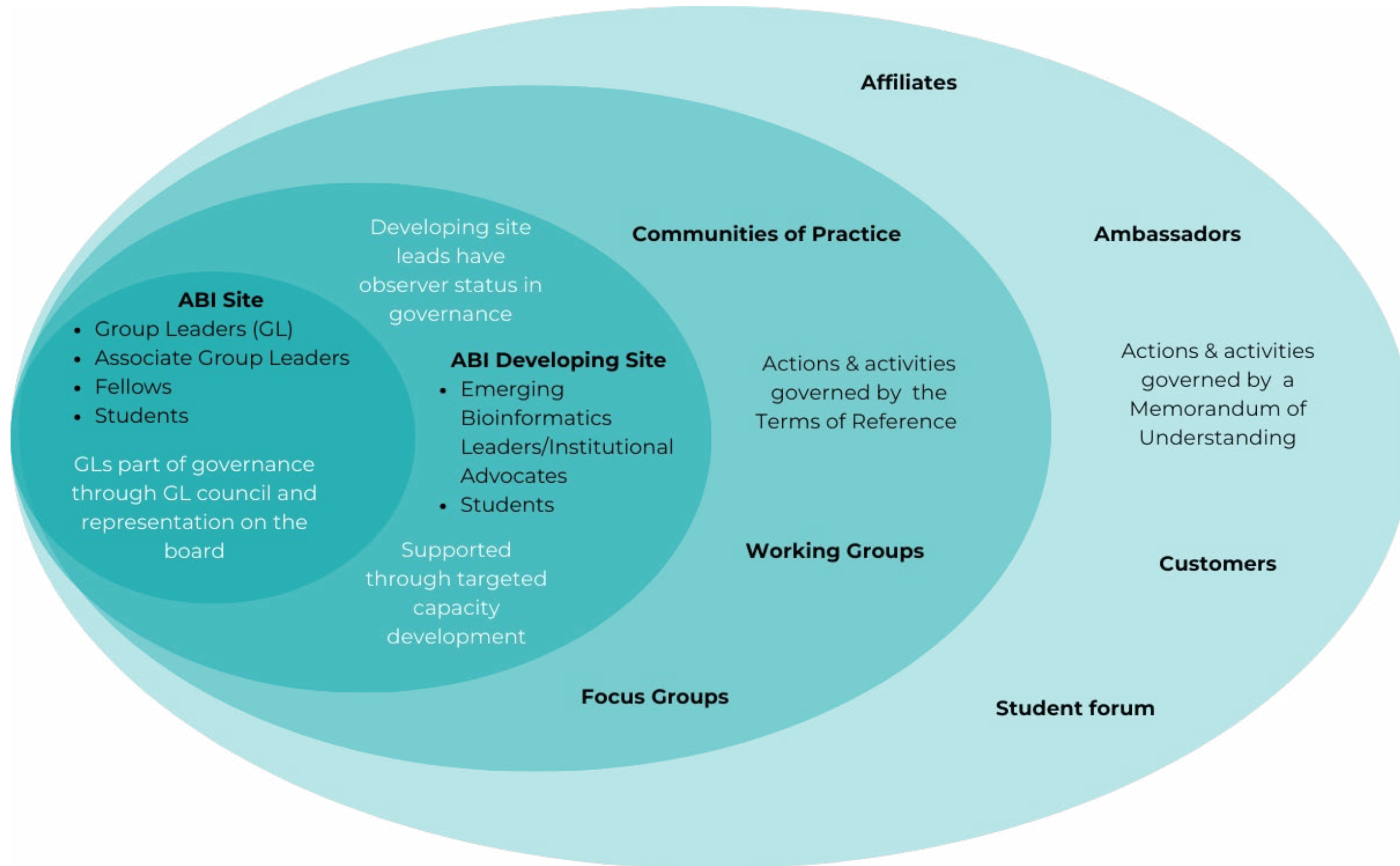
# STAKEHOLDERS



***The ABI aims to serve all relevant stakeholders across the life sciences, encompassing a wide range of research areas, data types, and technologies.***



# DIFFERENT COMPONENTS OF THE ABI



**RESEARCH**

**TRAINING**

**SERVICES**

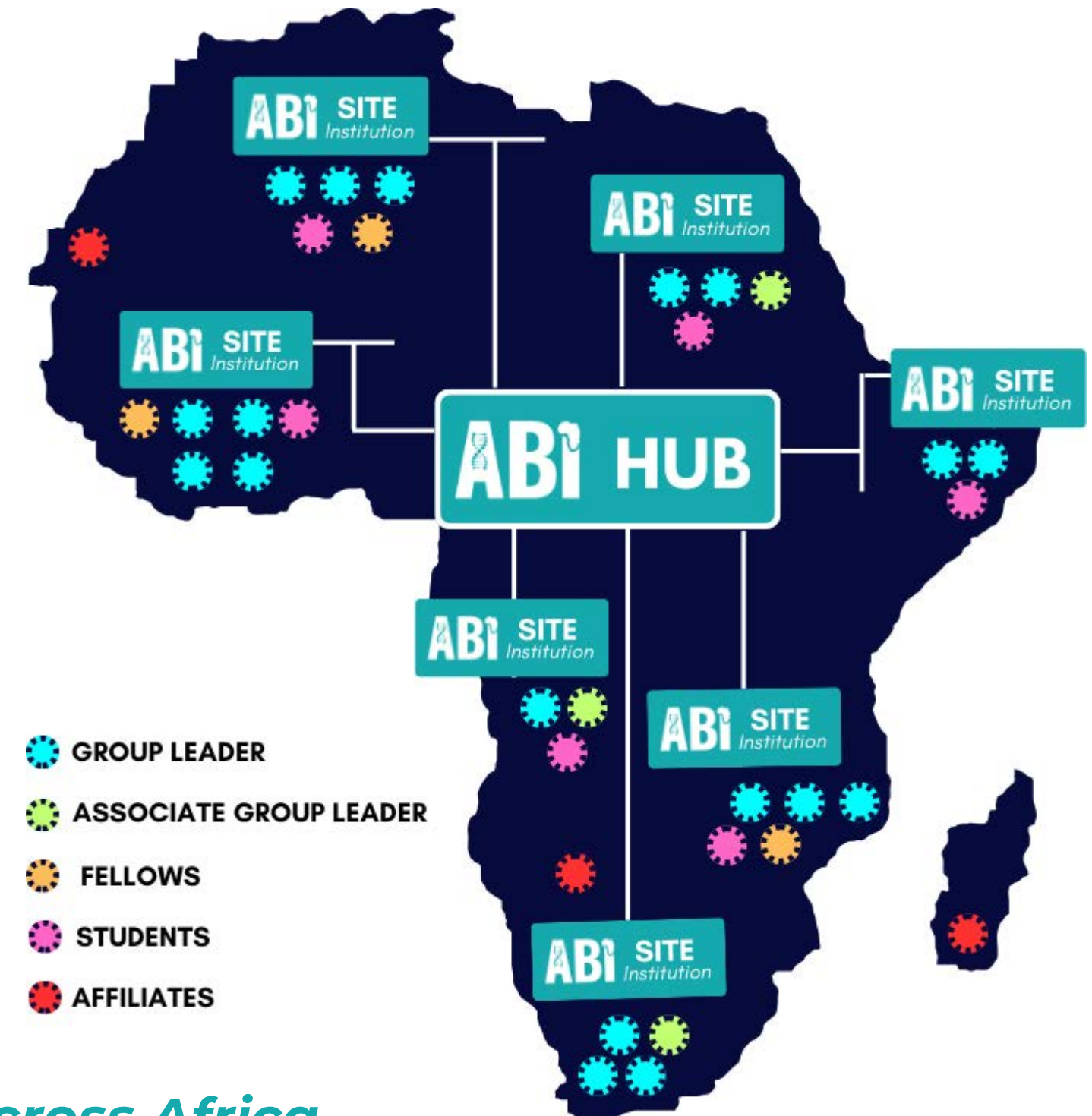


**Analytical services**  
**Data and computational infrastructure**  
**African databases and resources**

# BUILDING A PAN AFRICAN NETWORK

The ABI is building a distributed, continent-wide network coordinated by a central Hub.

- Group Leaders will lead research, training, and service delivery.
- Applications from the first Group Leader call are currently under review.
- Associate Group Leaders and Fellows will be added as the network grows, supported through mentorship.
- Emerging sites will be supported to strengthen bioinformatics in underrepresented regions.
- Affiliates will engage as collaborators and partners.



*This scalable model fosters regional collaboration across Africa.*



**PROGRESS SINCE THE LAST INFORMATION  
SESSION (JULY 2025)**

# TRAINING WORKING GROUP UPDATE

- TWG formed from ABI sign-up respondents to ensure broad community representation
- Introductory meeting held 8 July 2025
- Meeting every 2 weeks
- Working on training strategy for the ABI
- Summer School planning underway:
  - Host-site applications closed 26 October and are under review
  - Curriculum development in progress –focus on NGS
  - Further details will be shared when participant applications open

# TRAINING RESOURCES AVAILABLE

## Bioinformatics Training Resources

### eGenomics

Your catalogue of past training materials

Browse workshops, slides, recordings, datasets from H3ABioNet, eLwazi, AfriGen-D, and other partners.

[Browse eGenomics](#)



[All](#) [Catalogues](#) [Interactive Resources](#) [Webinars](#) [Planning & Guides](#)



**Featured**

### eGenomics

Our central index of ABI-affiliated training content (slides, videos, notebooks, datasets).

[Open catalogue](#) →



### GOBLET

International registries of bioinformatics training events and materials.

[Visit resource](#) →



### TeSS

ELIXIR's training portal which links to training events and materials

[Visit resource](#) →



ERuDIte



TeachE'nG



mGenAfrica



**Scan to be directed to  
curated training  
resources available on  
the ABI website**

# ANNOUNCE UPCOMING TRAINING



Home > Upcoming Training Events

## Upcoming training events

Submitter information

Title \*

- Select -

First Name \*

Last Name \*

Email \*

eg: example@example.com

Announcing an Upcoming Training

Title of training \*

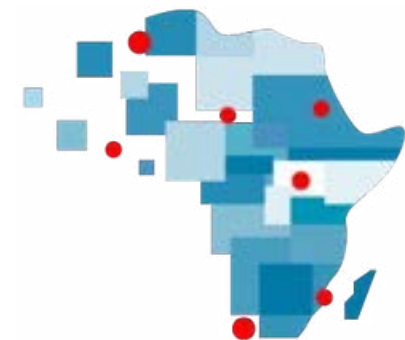
Short Description of training \*



# OUTREACH HIGHLIGHTS

Over the past few months, the ABI has actively supported or participated in a range of key events:

- Data for Health in Africa Meeting & 5th DS-I Africa Consortium Meeting -Ghana
- Ga4GH 13th Plenary Meeting -Uppsala
- The Alliance at the African Plant Breeders Association (APBA) Conference 2025 -Zimbabwe
- Chan Zuckerberg Initiative (CZI) -California
- 1st Tunisian Bioinformatics Conference (Presentation and travel fellowships) -Tunisia
- PHA4GE Conference 2025 –South Africa



**DS-I Africa**  
Data Science for Health Discovery  
and Innovation in Africa

**Chan  
Zuckerberg  
Initiative** 



**Global Alliance**  
for Genomics & Health  
Collaborate. Innovate. Accelerate.



**Public Health Alliance for  
Genomic Epidemiology**



# UPCOMING EVENTS

The ABI will support or present at the following upcoming events:

- CHPC conference December 2025 –South Africa
- CoGSAYR conference in January 2026 –Nigeria
- Annual ISB Biocuration Conference, April 2026 –South Africa
  
- ABI Summer School –date and venue TBD
- Planning for the inaugural ABI Annual Meeting –date and venue TBD



# JOIN A COMMUNITY OF PRACTICE

The ABI has established Communities of Practice to connect bioinformaticians and domain experts with shared research interests. These groups will:

- Provide collaborative spaces for sharing knowledge, tools, and workflows
- Support continuous learning and interdisciplinary collaboration
- Address common challenges across the network

**Suggest additional  
CoPs –Agriculture?**

*The following CoPs have been established:*



**Artificial  
Intelligence**



**Psychiatry,  
Neuroinformatics  
& Mental Health**



**Pathogen  
Surveillance &  
Antimicrobial  
Resistance**



**Human Genomics  
& Genomic  
Medicine**



**Rare Diseases**



**Scan to join**



**UPDATES FROM THE INTERIM COUNCIL**

# INTERIM COUNCIL UPDATES

The Interim Council and Breakaway Task Force have focused on establishing the ABI's operational foundation.

Key progress includes:

- Selection of the Independent Advisory Committee
- Finalisation of the organisational model
- Review and proposal of the governance model
- Criteria for the ABI Hub finalised (applications opening soon)
- Group Leader application and review process
- Drafting and ratification of MoUs for future ABI sites once Group Leaders are appointed
- Process for other membership opportunities

# UPDATE ON THE IAC

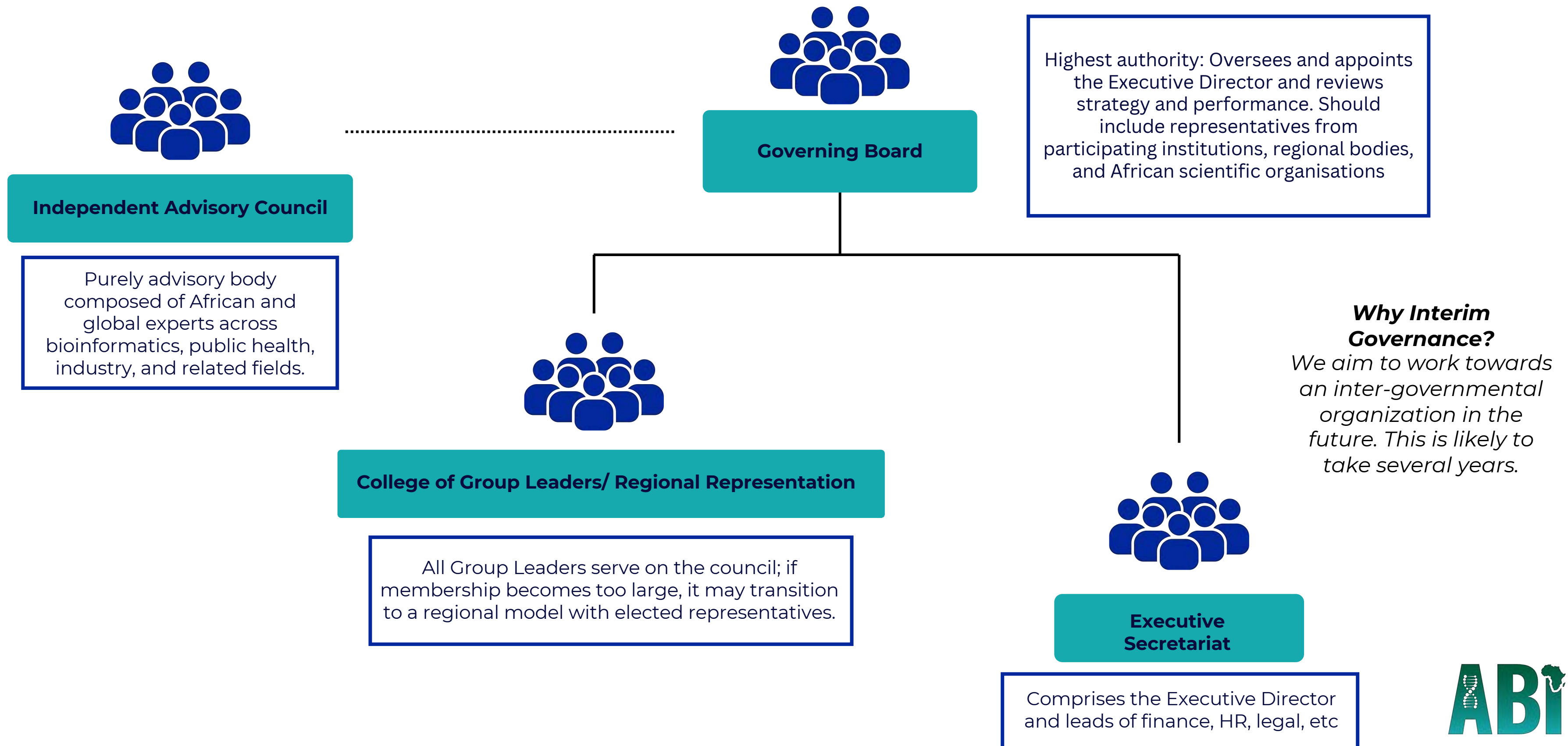
The Independent Advisory Committee has been established and had their introductory meeting this week

Name	Expertise
<b>Dame/Prof Janet Thornton</b>	Previous Director EBI, established ELIXIR
<b>Dr Katherine Littler</b>	Co-head of the Global Health Ethics & Governance Unit at WHO Headquarters in Geneva
<b>Prof Lise Korsten</b>	President African Academy of Sciences
<b>Prof Ewan Birney</b>	Interim Director EMBL, previous Director EBI, previous Chair of GA4GH
<b>Dr Josefina Campos</b>	Unit Head Genomics and Analytics- WHO, previously Director of the National Genomics and Bioinformatics Center at ANLIS Malbrán, Ministry of Health in Argentina
<b>Dr Tshiamo Motshegwa</b>	Director Africa Open Science Platform
<b>TBC</b>	Africa CDC
<b>Mr Ben Durham</b>	SA Department of Science and Innovation, first rotating government representative

Seeking an additional member from Industry and representing the Asian region



# PROPOSED INTERIM GOVERNANCE STRUCTURE



# PROPOSED GOVERNING BOARD REPRESENTATION

Category	Seat allocation
ABI Group Leader Representatives	2-3
ABI sites	2-3
Industry & Private Sector	1
Large data-driven African initiatives/projects	1
Regional bodies (AU, NEPAD, Africa CDC, AU-IBAR)	2
African bioinformatics diaspora	1
Major funding partners (non-voting: observer status only)	1

- The ABI aims to establish a Governing Board representative of its diverse stakeholders
- Each stakeholder category will be allocated a set number of seats
- Nominations will be accepted from the community within each category

# PROPOSED GOVERNANCE STRUCTURE



## Independent Advisory Council

Purely advisory body composed of African and global experts across bioinformatics, public health, industry, and related fields.



## Governing Board

Highest authority: Oversees and appoints the Executive Director, and reviews strategy and performance. May include representatives from participating institutions, regional bodies (e.g., AU, NEPAD, Africa CDC), funders, and African scientific organisations (e.g. SFA)



## College of Group Leaders/ Regional Representation

All Group Leaders serve on the council; if membership becomes too large, it may transition to a regional model with elected representatives.

***Please use the poll to give us your feedback on the proposed governance structure***



## Executive Secretariat

Comprises the Executive Director and leads of finance, HR, legal, etc

# CRITERIA FOR HOSTING THE ABI HUB

The host organization does not run the hub, it hosts the executive secretariat and key staff  
**The bid to host the hub will be released soon.**

## Institutional Environment

- Bioinformatics groups & service units
- Departmental activities that support ABI
- National & international partnerships
- Institutional endorsement

## Physical Infrastructure

- Office space & facilities
- Backup power, cooling
- Internet connectivity
- Proximity to research groups

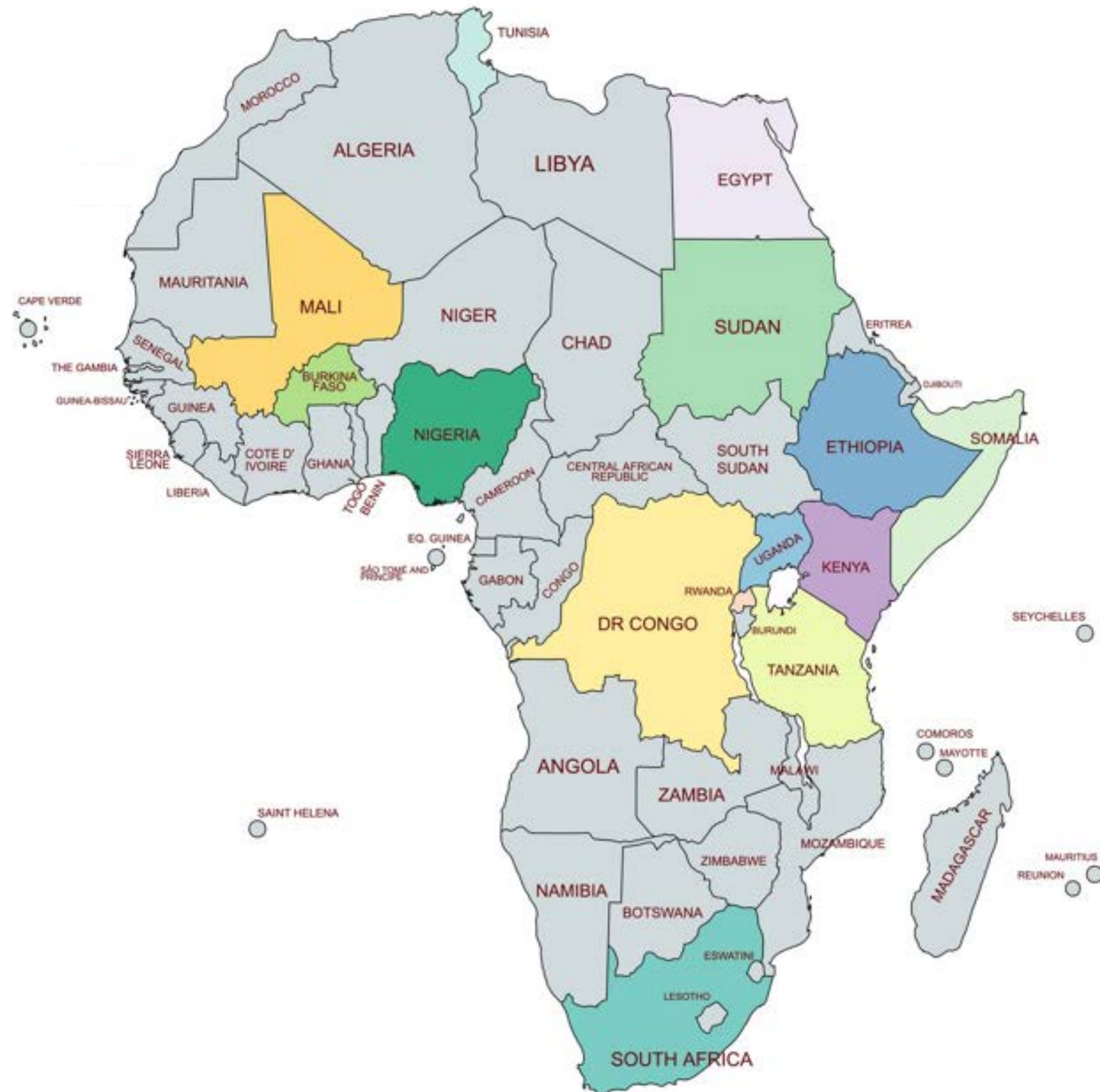
## IT & Technical Capacity

- Office computing resources
- Teaching facilities
- Web platforms for research/training
- Data storage & management
- HPC access & expansion potential
- IT support + systems admin

## Logistics & Administrative Capability

- HR, legal, finance, grants support
- Secretariat capabilities
- Travel access within Africa
- Visa processes
- Accommodation availability
- Banking system stability & international payment ease

# GROUP LEADER APPLICATIONS



- Applications for the first cohort closed on 19 September 2025
- 41 applications received from 14 African countries
- Review process currently underway
- Selection is being finalised

***Selected applicants will be notified, along with next steps, in the upcoming weeks***

*Reviewers discussed the scoring criteria, which may be updated based on their review process. If you are not selected in this round do not despair, there are other opportunities for membership*

# UPCOMING MEMBERSHIP OPPORTUNITIES

- Group Leader applications will remain open and applications will be reviewed periodically
- Calls for Associate Group Leaders and Fellows will be opening soon
- This will be followed by other membership categories, such as Affiliates and Emerging sites



***Join the ABI mailing list to be notified when applications open***

- Establishment of the ABI Student Forum

# STUDENT FORUM

**Purpose:** Create a connected, skill-sharing community for students and early-career researchers across Africa.

## Proposed Structure/Activities

- 💬 Digital Forum Platform – Tag-based queries & skill alerts for peer problem-solving.
- 🔗 Peer & Formal Mentorship – Match students with peers and professionals.
- 🎯 Targeted Training – Mini-courses & workshops in priority bioinformatics areas.
- 🌐 Annual Student Forum Meeting – Showcase student research, innovation & leadership.
- 👤 Career Development – Professional growth, networking & leadership opportunities.

### Impact:

- Strengthened African bioinformatics community.
- Enhanced student skills, confidence, and employability.
- Sustainable peer-support and mentorship ecosystem.

### Next Steps:

- Launch pilot in 2026
- Build community ambassadors
- Host 1st Annual Forum in 2027.

# STUDENT FORUM

**Purpose:** Create a connected, skill-sharing community for students and early-career researchers across Africa.

## Proposed Structure/Activities

- 💬 Digital Forum Platform – Tag-based queries & skill alerts for peer problem-solving.
- 🔗 Peer & Formal Mentorship – Match students with peers and professionals.
- 🎯 Targeted Training – Mini-courses & workshops in priority bioinformatics areas.
- 🌐 Annual Student Forum Meeting – Showcase student research, innovation & leadership.
- 🇳🇬 Career Development – Professional growth, networking & leadership opportunities.

### Impact:

- Strengthened African bioinformatics community.
- Enhanced student skills, confidence, and employability.
- Sustainable peer-support and mentorship ecosystem.

### Next Steps:

- Launch pilot in 2026
- Build community ambassadors
- Host 1st Annual Forum in 2027.

**Please use the poll to give us your feedback on student engagement with the ABI**





**NEXT STEPS FOR THE ABI**

# UPCOMING PLANS AND ACTIVITIES

- Call for bids to host the ABI hub will open shortly
- Calls for Associate Group Leaders and Fellows will be opening soon
- Implementation of the governance structure –calls for Board nominations
- The secretariat is working on a plan for ABI services
  - Marketplace for analytical services
  - Assessment of data and computational infrastructure needs for large projects
  - Federated Trusted Research Environments
  - Development of criteria for ABI endorsed African resources
- ABI plans to continue with quarterly information sessions
- Follow us on social media: <https://www.bioinformaticsinstitute.africa/contact-us>

QUESTIONS OR SUGGESTIONS?



<https://bioinformaticsinstitute.africa>